



GMT MONTHLY MEMBERSHIP PROGRESS REPORT

Results as of: 9/30/2023

Multiple District 27

LOCATION: WISCONSIN

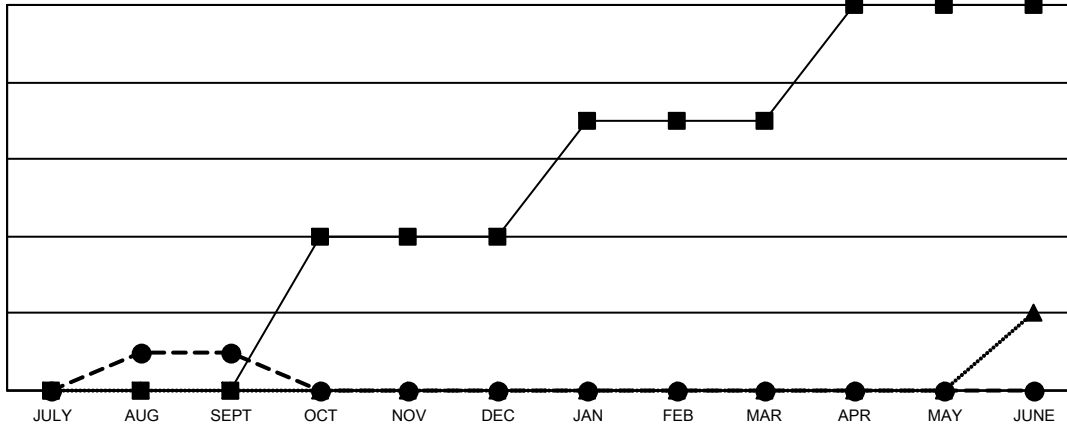
GMT: OPEN

GMT CA 1

| Clubs | | | |
|-----------------------|---------------|-----------|---------------|
| RESULTS FOR 2023-2024 | | | |
| QUARTER | NEW CLUB GOAL | NEW CLUBS | DROPPED CLUBS |
| JULY/AUG/SEPT | 0 | 1 | 0 |
| OCT/NOV/DEC | 4 | 0 | 0 |
| JAN/FEB/MAR | 3 | 0 | 0 |
| APR/MAY/JUNE | 3 | 0 | 0 |

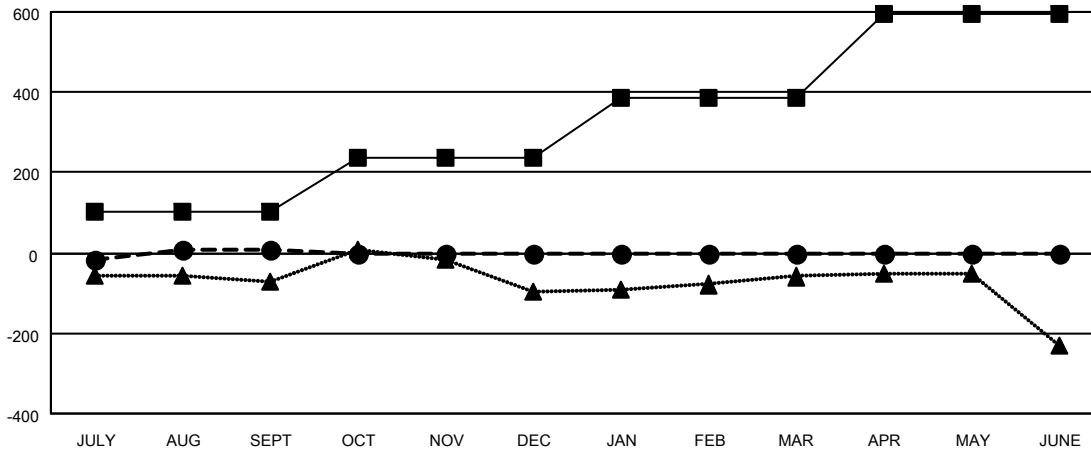
| Members | | | |
|-----------------------|------------------------|----------------------|----------------------------------------------|
| RESULTS FOR 2023-2024 | | | |
| QUARTER | MEMBER GROWTH NET GOAL | MEMBER GROWTH ACTUAL | DROPPED MEMBERS ACTUAL (including transfers) |
| JULY/AUG/SEPT | 103 | 393 | 356 |
| OCT/NOV/DEC | 135 | 0 | 0 |
| JAN/FEB/MAR | 147 | 0 | 0 |
| APR/MAY/JUNE | 211 | 0 | 0 |

GOALS AND ACTUAL NEW CLUBS CUMULATIVE



- - CURRENT YEAR GOALS FOR NEW CLUBS
- - CURRENT YEAR ACTUAL NEW CLUBS
- ▲ - LAST YEAR ACTUAL NEW CLUBS

GOALS AND ACTUAL MEMBERS CUMULATIVE



- - MEMBER GROWTH NET GOAL
- - MEMBER GROWTH ACTUAL
- ▲ - LAST YEAR MEMBERSHIP ACTUAL

| | | |
|------------------------|-----------------------------------------------------------|---------------------------------------|
| DROPPED CLUBS: 0 | 154 CLUBS OF 505 ADDED 1 OR MORE NEW MEMBERS | GENDER DISTRIBUTION |
| | | MALE 11,835 (70.86%) |
| | | FEMALE 4,866 (29.14%) |
| DROPPED MEMBERS | CLICK HERE FOR CUMULATIVE MEMBERSHIP DATA | TOTAL FAMILY UNIT MEMBERS 3,536 |
| DECEASED 66 | | FAMILY MEMBERS PAYING HALF DUES 1,796 |
| CLUB CANCELLED 0 | | |
| OTHER 291 | | |
| TOTAL 357 | | |